

This Right of Way Map when recorded is an instrument of conveyance, transferring in accordance with the Florida Statutes 337.29 (3) all right, title, and interest of the Florida Department of Transportation in the road, street, highway, set forth on this map to Martin County, Florida.

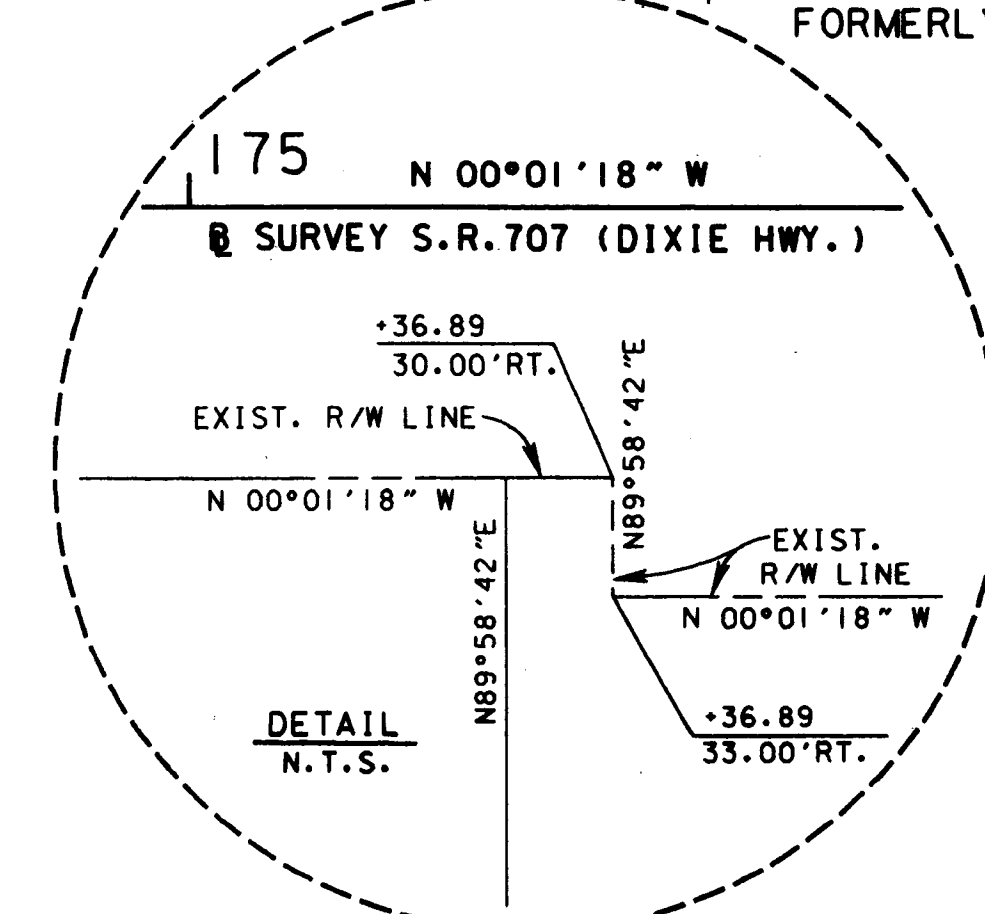
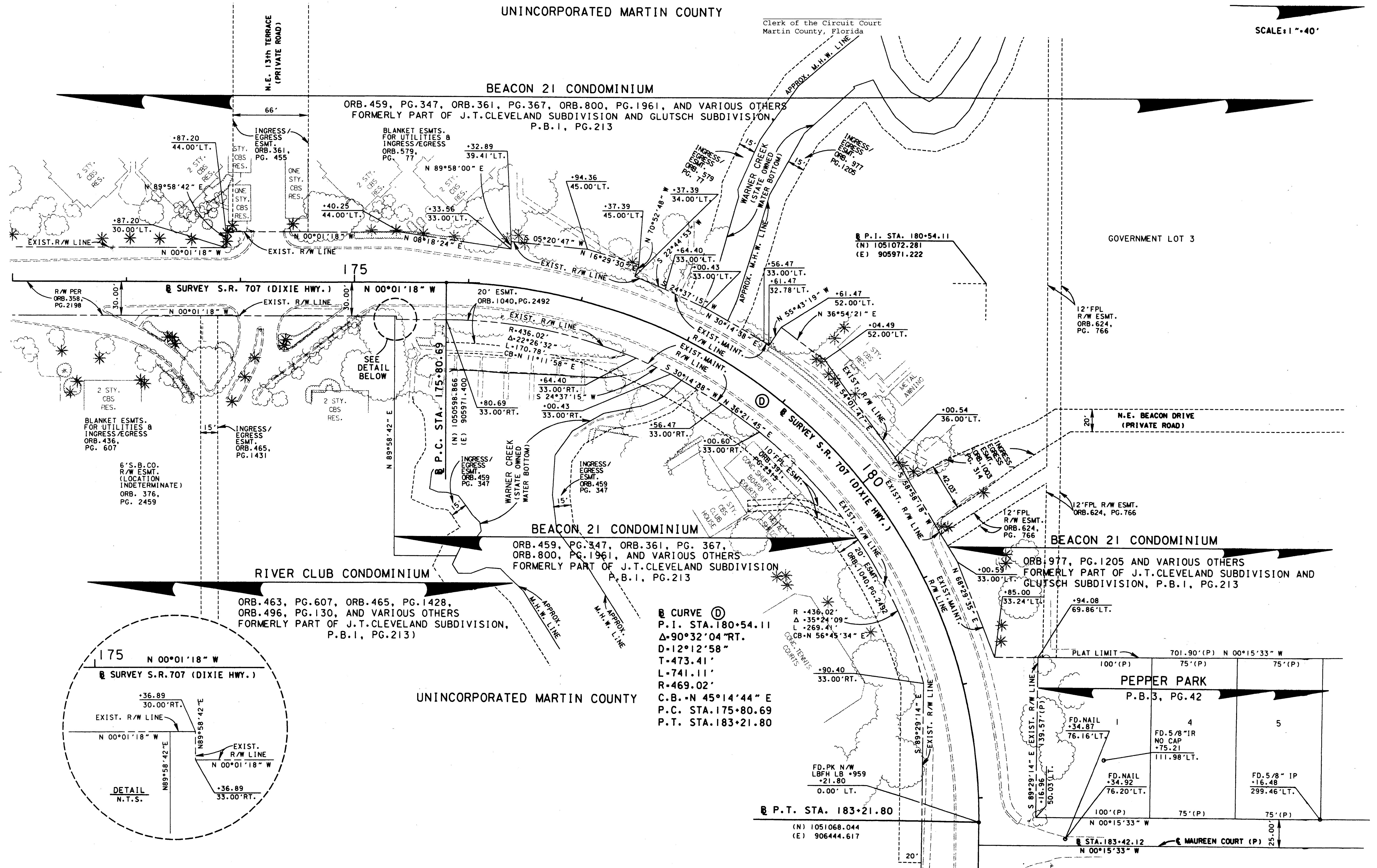
Recorded in the Public Records of Martin County, Florida, this ___ day of _____, A.D. 20___, in Plat Book _____, Page _____.

SEC. 27, TWP. 37 S., RGE. 41 E.

SCALE: 1" = 40'

UNINCORPORATED MARTIN COUNTY

Clerk of the Circuit Court
Martin County, Florida



SEE SHEET 1 FOR LEGEND AND GENERAL NOTES

STATE ROAD 707 (DIXIE HWY.) FROM SAVANNAH ROAD TO ARCH STREET

MAINTENANCE MAP	FLORIDA DEPARTMENT OF TRANSPORTATION RIGHT OF WAY MAPPING	APPROVED BY <i>J. Smith</i>	DATE 5/12/09	REVISION	BY	DATE	REVISION	BY	DATE	BY	DATE	FED. PROJ. NO. N/A	SECTION 89030-MAINT. (4)	MAPS PREPARED BY LB 696 KIMLEY-HORN AND ASSOCIATES	FIELD BOOK NO.'S SEE SHEET 1
		DISTRICT RIGHT OF WAY SURVEYOR								FINAL L. CEFOLIA 4/03/03	CHECKED J. EDGAR 4/07/03	STATE ROAD 707 (DIXIE HWY.) MARTIN COUNTY	ITEM/SEGMENT NO. 4035911	SCALE: 1" = 40'	SHEET 8 OF 12